



# MONTHLY MEMBERSHIP PROGRESS REPORT

District 11 E2

Results as of: 6/30/2017

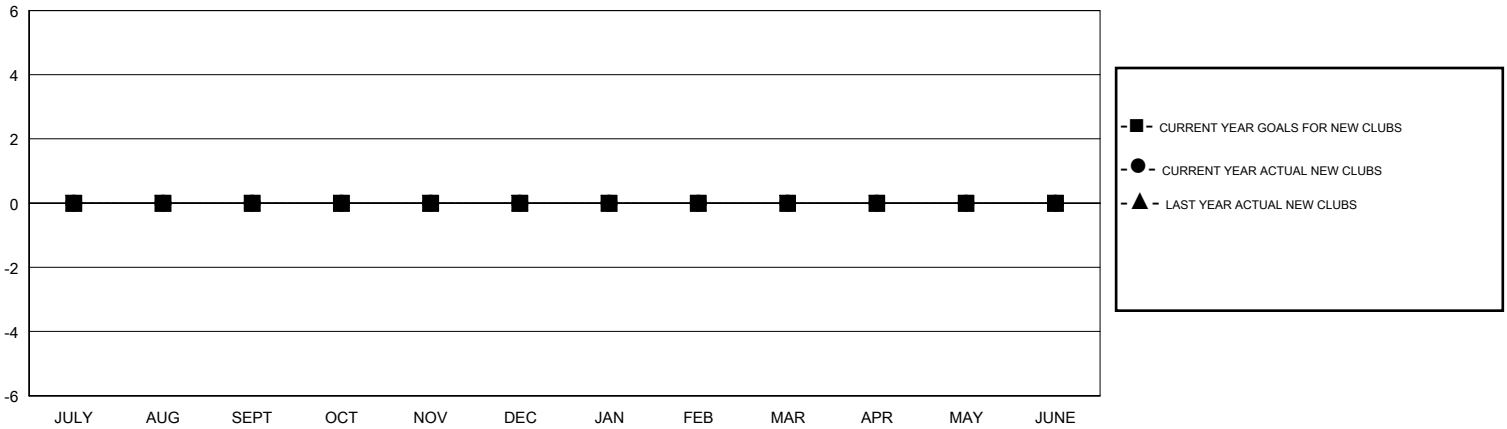
GMT: OPEN

LOCATION MICHIGAN

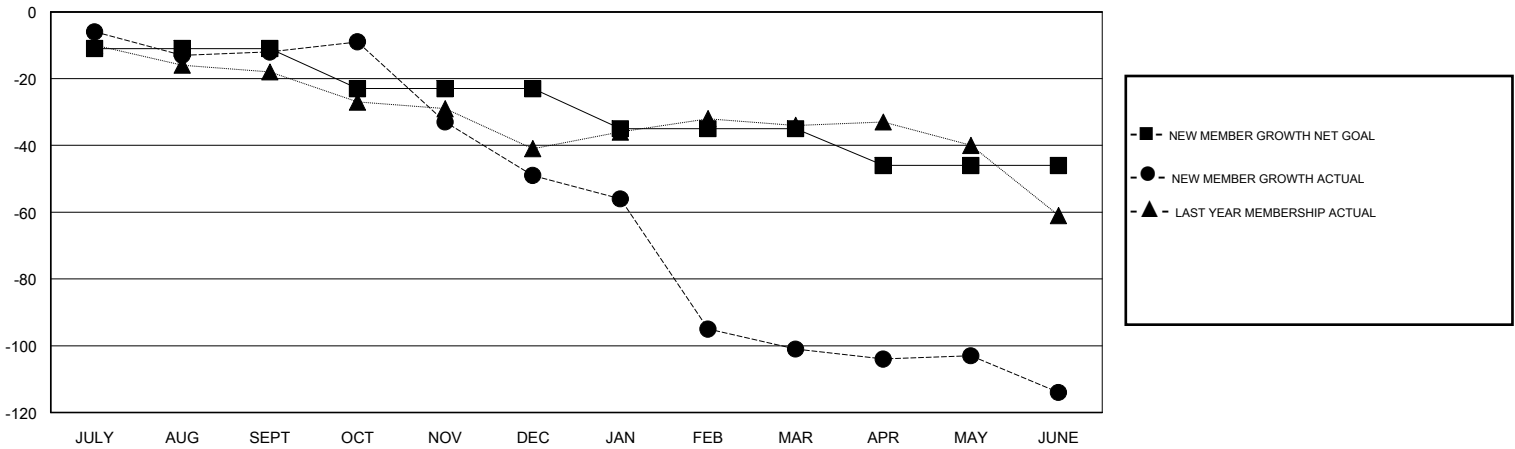
GMT CA

Clubs				Members			
RESULTS FOR 2016-2017				RESULTS FOR 2016-2017			
QUARTER	NEW CLUB GOAL	NEW CLUBS	DROPPED CLUBS	QUARTER	NEW MEMBER GROWTH NET GOAL (not reinstated or transfers)	NEW MEMBER GROWTH ACTUAL (not reinstated or transfers)	DROPPED MEMBERS ACTUAL (including transfers)
JULY/AUG/SEPT	0	0	1	JULY/AUG/SEPT	-11	28	40
OCT/NOV/DEC	0	0	0	OCT/NOV/DEC	-12	13	50
JAN/FEB/MAR	0	0	1	JAN/FEB/MAR	-12	10	62
APR/MAY/JUNE	0	0	0	APR/MAY/JUNE	-11	15	28

GOALS AND ACTUAL NEW CLUBS CUMULATIVE



GOALS AND ACTUAL MEMBERS CUMULATIVE



DROPPED CLUBS: 2	23 CLUBS OF 35 ADDED 1 OR MORE NEW MEMBERS	<b>GENDER DISTRIBUTION</b>
		MALE 676 (73.16%)
		FEMALE 248 (26.84%)
<b>DROPPED MEMBERS</b>	<a href="#">CLICK HERE FOR CUMULATIVE MEMBERSHIP DATA</a>	TOTAL FAMILY UNIT MEMBERS 128
DECEASED 25		FAMILY MEMBERS PAYING HALF DUES 65
CLUB CANCELLED 0		
OTHER 155		
<b>TOTAL 180</b>		